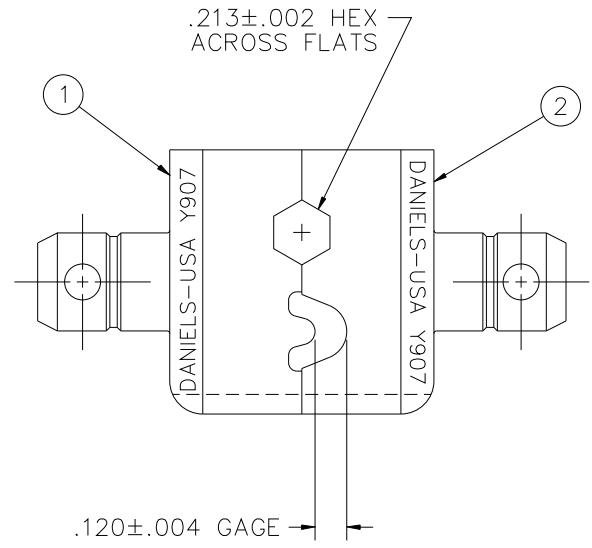
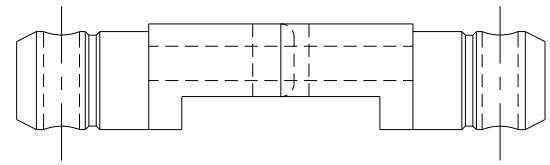



| REVISIONS | | | | |
|-----------|---------------|------------------|----------------|----------------|
| REV. SYM. | E.C.O. NUMBER | DESCRIPTION | BY DATE | APP'D DATE |
| A | 17715 | ORIGINAL RELEASE | JWJ 1/19/01 | RRR 1/19/01 |



| 4 | 6-1011 | 1 | Ø1/8 X 3/4 SPRING PIN |
|------|----------|------|-----------------------|
| 3 | 6-1010 | 1 | Ø1/8 X 1/2 SPRING PIN |
| 2 | Y907-2 | 1 | MOVABLE DIE |
| 1 | Y907-1 | 1 | STATIONARY DIE |
| ITEM | PART NO. | QTY. | DESCRIPTION/REMARKS |

| | | | | | |
|---|-----------------|--|-------------|-----------------|-----------------|
| DRN. D. DEPAIVA DATE 9/12/95 | DATE 9/12/95 |  DANIELS MANUFACTURING CORP. ORLANDO, FLORIDA CAGE 11851 | | | |
| CHK'D. DE | DATE 9/12/95 | | | | |
| APP'D. J. JOYCE DATE 1/19/01 | DATE 1/19/01 | TITLE DIE SET | | | |
| TOLERANCE: UNLESS OTHERWISE SPECIFIED FRACTIONS±1/32 ANGLES±1/2° DECIMALS: .X: ±.020 .XX: ±.010 .XXX: ±.005 .XXXX: ±.0005 REMOVE BURRS & BREAK SHARP EDGES .005-.015 | | WHERE USED: SIZE B | SCALE 2X | CAD P/N Y907 | SHEET OF 1 1 |
| DO NOT SCALE DRAWING | | POSTING | P/N Y907 | REV. A | |

4. PROJECT 3612: MILES ROYSTONE.
3. ITEMS 3 AND 4 NOT SHOWN BUT SHIPPED WITH DIE SET.
2. OPPOSING CRIMPING CAVITIES MUST ALIGN WITHIN .002
1. CRIMPING SURFACES TO BE $\sqrt{63}$

NOTES: