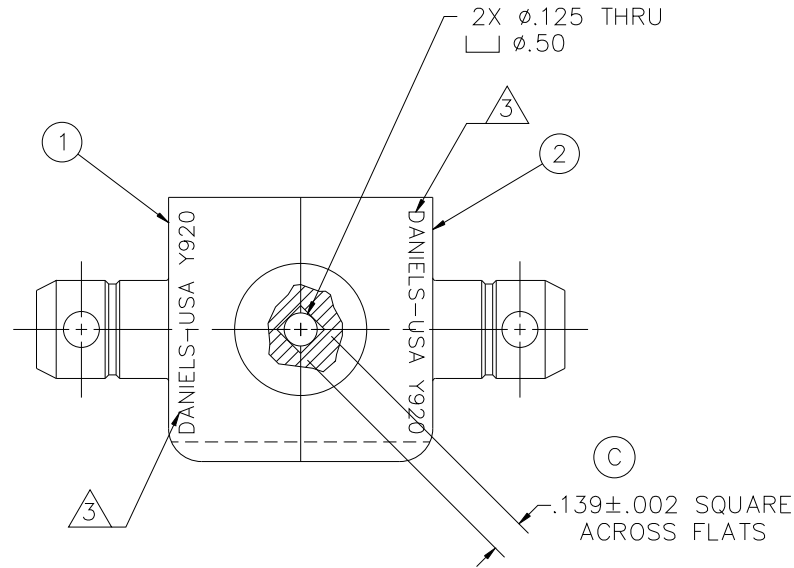
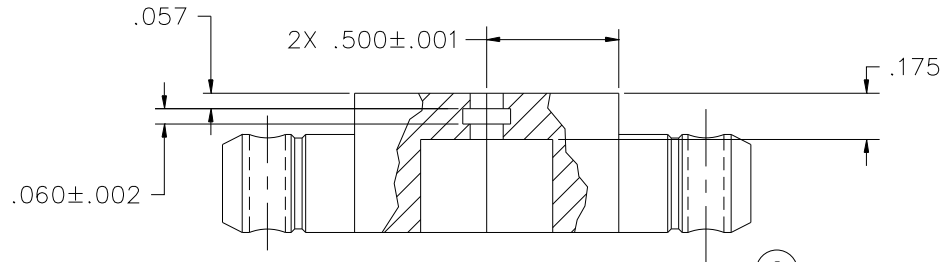


REVISIONS				
REV. SYM.	E.C.O. NUMBER	DESCRIPTION	BY DATE	APP'D DATE
B	14537	ADDED CB, 2 X, SQ. A/F	D.A.D. 6-27-95	M.SCRUGGS 6-27-95
C	14661	.139±.002 WAS .153±.002 ø.125 WAS ø .140	M.SCRUGGS 8-28-95	DE 8-29-95



5. PROJECT 3703

4. ITEMS 3 AND 4 NOT SHOWN BUT SHIPPED WITH DIE SET.

3. PERMANENTLY MARK AS SHOWN, 1/16 HIGH CHARACTERS.

2. OPPOSING CRIMPING CAVITIES MUST ALIGN WITHIN .002 .

1. CRIMPING SURFACES TO BE $\sqrt{63}$.

NOTES:

ITEM	PART NO.	QTY.	DESCRIPTION/REMARKS
4	6-1011	1	ø 1/8 X 3/4 SPRING PIN
3	6-1010	1	ø 1/8 X 1/2 SPRING PIN
2	HX4-11B	1	MOVABLE DIE BLANK
1	HX4-10B	1	STATIONARY DIE BLANK

RESTRICTED & CONFIDENTIAL CONFIDENTIAL PROPERTY OF DANIELS MANUFACTURING CORP. NOT TO BE DISCLOSED TO OTHERS, REPRODUCED OR USED FOR ANY OTHER PURPOSE, EXCEPT AS AUTHORIZED IN WRITING BY DANIELS MANUFACTURING. MUST BE RETURNED TO DANIELS MANUFACTURING CORP. ON COMPLETION OF ORDER OR OTHER PURPOSE FOR WHICH LENT.	MATERIAL	(OHTS-06)	
	HEAT TREAT	HRC 52-55	
	FINISH	BLACK OXIDE PER MIL-C-13924	
	DO NOT SCALE DRAWING		
DRN. M.SCRUGGS DATE 6/6/95 CHK'D. D.DEPAIVA DATE 6/27/95		DMC DANIELS MANUFACTURING CORP. ORLANDO, FLORIDA CAGE 11851	
APP'D. D.DEPAIVA DATE 8-95 APP'D. DATE		TITLE DIE SET	
TOLERANCE: UNLESS OTHERWISE SPECIFIED FRACTIONS±1/32 ANGLES±1/2° DECIMALS: .X: ±.020 .XX: ±.010 .XXX: ±.005 .XXXX: ±.0005 REMOVE BURRS & BREAK SHARP EDGES .005-.015		WHERE USED: SIZE B SCALE 2X CAD P/N Y920 SHEET 1 OF 1 POSTING P/N Y920 REV. C	