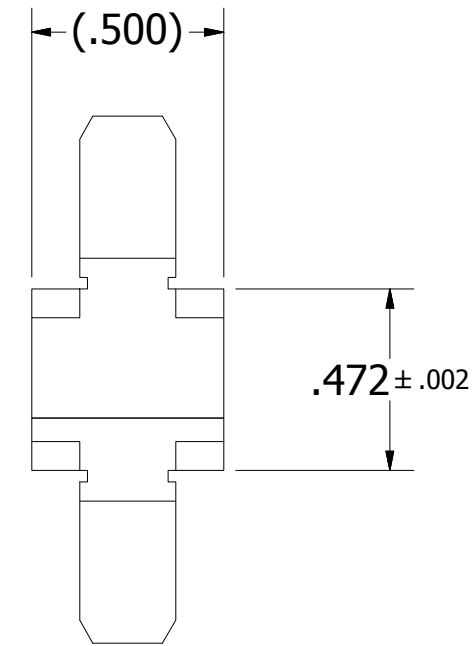
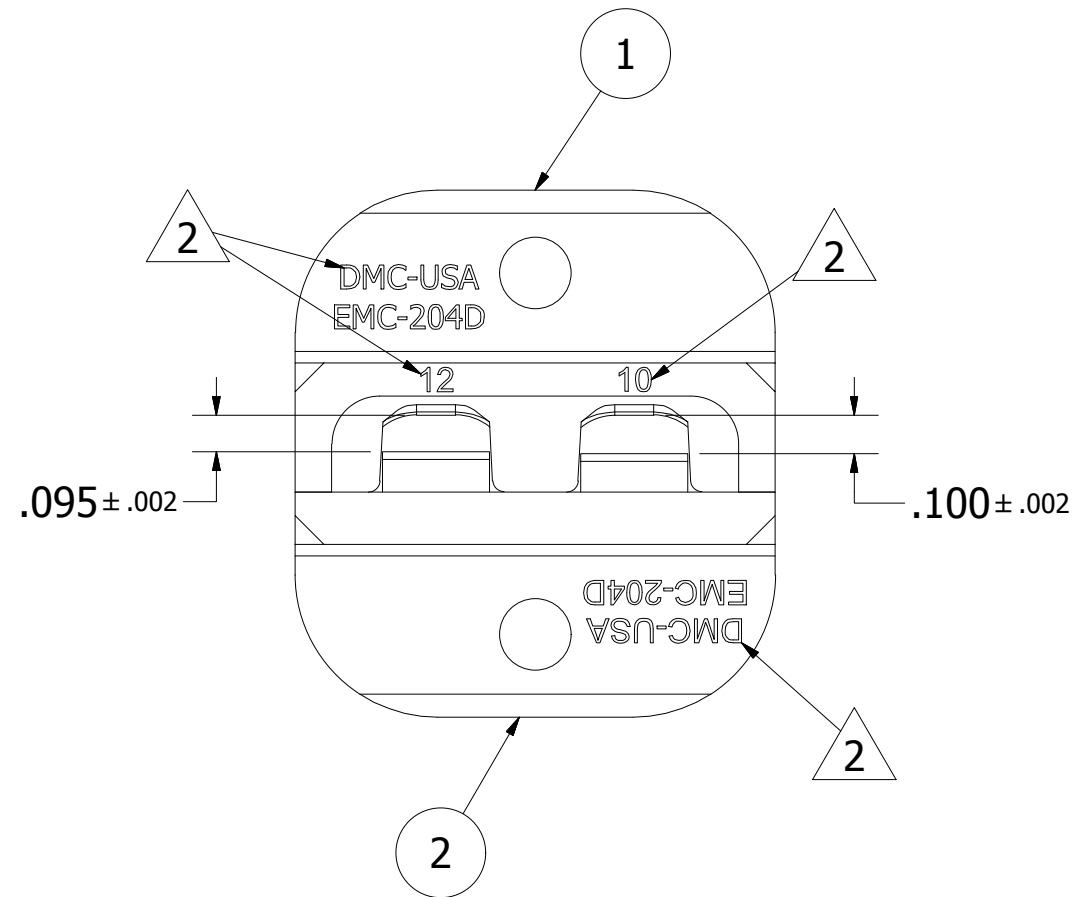


USERS MUST ASSURE THEY ARE USING THE CORRECT REVISION.

REVISIONS

REV	ECO NO.	DESCRIPTION	BY	DATE	APP'D BY	DATE
A	24398	ORIGINAL RELEASE	K. KOONS	8/12/2016	TLM	8/12/2016



- 4. PROJECT 10659 : AXCESOR.
- 3. FUNCTIONAL EQUIVALENT TO TE 58630-1.

2 PERMANENTLY MARK AS SHOWN, 1/16" HIGH.
IF NOT ALREADY DONE AT THE PIECE PART LEVEL.

1. POLISH CAVITIES OF ITEM 1.
NOTES:

RESTRICTED & CONFIDENTIAL
CONFIDENTIAL PROPERTY OF DANIELS MANUFACTURING CORP. NOT TO BE DISCLOSED TO OTHERS. REPRODUCTION OR USED FOR ANY OTHER PURPOSE EXCEPT AS AUTHORIZED IN WRITING BY DANIELS MANUFACTURING. MUST BE RETURNED TO DANIELS MANUFACTURING CORP. ON COMPLETION OF ORDER OR PURPOSES FOR WHICH LENT.

CREATED FROM AN INVENTOR MODEL.
CHANGES MUST BE REFLECTED IN THE 3D PART

DO NOT SCALE DRAWING

MATERIAL	ITEM	PART NO.	QTY.	DESCRIPTION / REMARKS	
N/A	2	EMC-204D-2	1	MOVABLE DIE	
N/A	1	EMC-204D-1	1	STATIONARY DIE	
N/A	DRN. KIRK C KOONS CHK'D. TLM		DATE 8/12/2016 DATE 8/12/2016	DANIELS MANUFACTURING CORP. ORLANDO, FLORIDA CAGE 11851	
N/A	TOLERANCE: UNLESS OTHERWISE SPECIFIED FRACTIONS ± 1/32 ANGLE ± 1/2° DECIMAL INCHES: .X ± .020 .XX ± .010 .XXX ± .005 .XXXX ± .0005 REMOVE BURRS AND BREAK SHARP EDGES .005 - .015 SURFACE FINISH TO BE 63/ OR BETTER ALL OVER		TITLE DIE SET		
N/A	FINISH		WHERE USED:		
		SIZE	SCALE	CAD P/N	SHEET
		B	2 : 1	EMC-204D	1 OF 1
		DWG. NO. EMC-204D			REV. A

