

# APMOD

## Automatic Positioner Crimp System

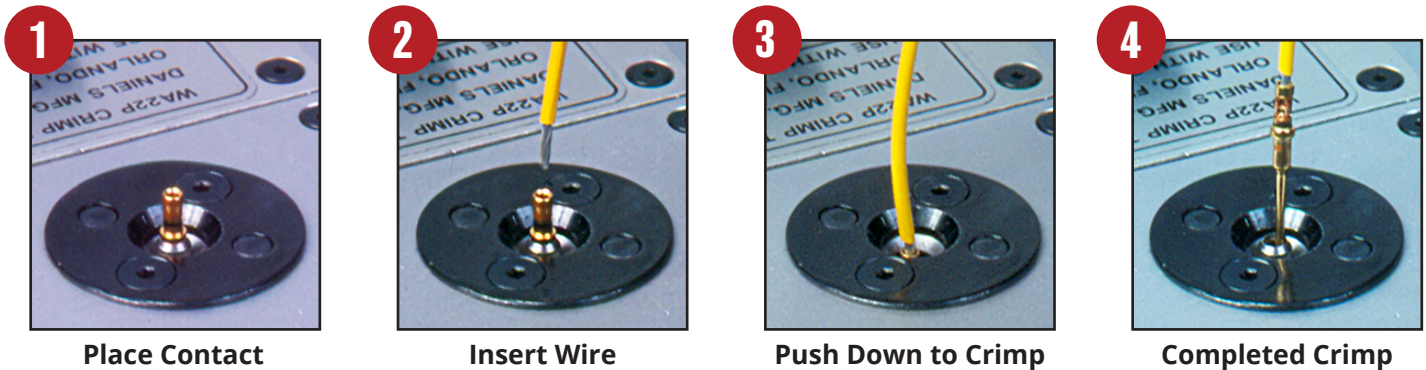


Pictured: APMOD, KQA43, & WA22SS-CC

The APMOD, automatic positioner crimp system enhances DMC®'s pneumatic crimp tool's capabilities by allowing users to actuate a pneumatic crimp tool without pressing a trigger or using a foot pedal.

The APMOD actuates the tool when the operator correctly places a contact and wire into the tool. First, the operator loads the contact into the tool so the wire barrel remains visible. Then, the wire is inserted ensuring all strands of the wire are inside the wire barrel. After proper insertion, slight pressure on the wire pushes the contact into the automatic positioner which initiates the crimp.

The APMOD is compatible with DMC's WA22, WA22P, and WA27F series tools, including the side selector (SS) and/or cycle counter (CC) options. These tool series accommodate wire sizes from 12 to 32 AWG. The APMOD is not recommended for wire sizes smaller than 26 AWG.



1 Place Contact

2 Insert Wire

3 Push Down to Crimp

4 Completed Crimp

AWG Range	AP Crimp System
32-20	WA22QA
28-16	WA22PQA
26-12	WA27FQA

# APMOD

## Automatic Positioner Crimp System

### Retro Fit Kits

DMC offers retrofit kits to upgrade standard pneumatic tools to automatic positioner crimp systems. The APMOD-WA27F-RK includes the necessary positioner ring to affix turrets. The conversion also requires the appropriate QA positioner.



Pictured: APMOD-WA22-RK

AP Retro Fit Kit P/N	Pneumatic Tool
APMOD-WA22-RK	WA22 (M22520/2-01)
APMOD-WA22-RK	WA22P (M22520/7-01)
APMOD-WA27-RK	WA27F (M22520/1-01)

For additional models, please contact DMC.

### Quick Assembly (QA) Positioners



Pictured: KQA43

These positioners feature bayonet-type mounting pins, allowing for quick, tool-free interchange of positioners to meet various crimping requirements. Each QA positioner is clearly marked with the contact type and wire size selector setting.

QA positioners are available for most contacts for existing "K" and "86" positioners, as well as "TH" and "TP" series heads for sizes 26-12. The QA positioners can be ordered separately. QA positioners are not available for the "straightener" positioner series.

QA Positioner Ordering Guide	
Standard P/N	QA Positioner P/N
K__	KQA__
86 -__	86 -__
TP__	TPQA__
TH__	THQAP__-_*

\* The last number identifies the position color code with "-2" for Blue, "-4" for Red, "-5" for Yellow, and "-6" for Green.