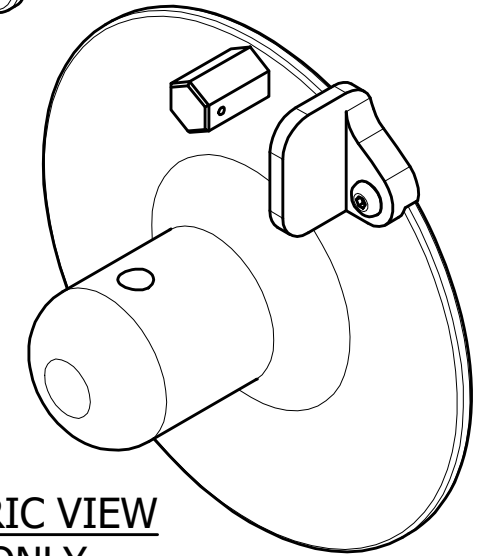
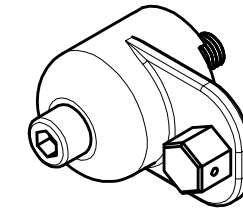
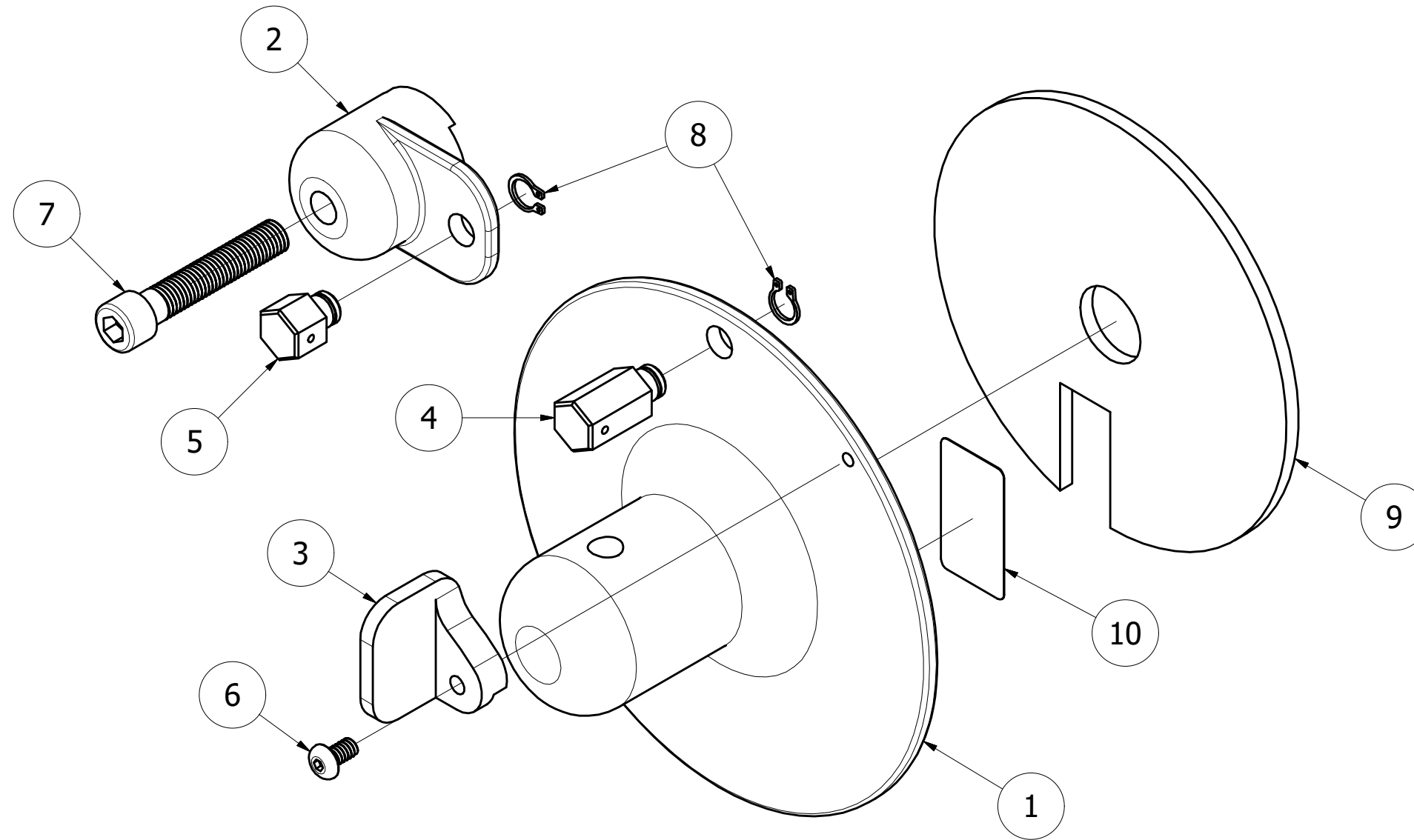


USERS MUST ASSURE THEY ARE USING THE CORRECT REVISION.

REVISIONS

REV	ECO NO.	DESCRIPTION	BY	DATE	APP'D BY	DATE
A	24586	ORIGINAL RELEASE	K. KOONS	1/17/2017	TLM	1/17/2017
B	25906	ADDED ITEMS 9 & 10 ; REVISED NOTE 1	K. KOONS	11/6/2019	TD	11/6/2019
C	25938	ADDED ITEM 11 & NOTE 2	K. KOONS	11/29/2019	CG	11/29/2019



ISOMETRIC VIEW
REF ONLY

ITEM	PART NO.	QTY.	DESCRIPTION / REMARKS
11	15-3318-DS	1	DATASHEET
10	15-2024	1	LABEL, REFLECTIVE
9	4-1864	1	FOAM DISC
8	4-1072	2	RETAINING RING (5100-25)
7	1-1871	1	1/4-28 X 1-3/8 SHCS
6	1-1050	1	6-32 X 1/4 BUTT HD SCREW
5	SCT-TB1-3	1	SWIVEL
4	15-3318-4	1	SWIVEL
3	15-3318-3	1	SHIELD, SCT, MPT-250C
2	15-3318-2	1	STATIONARY GRIP, SCT, MPT-250C
1	15-3318-1	1	MOVABLE GRIP, SCT, MPT-250C

C
2. ITEM 11 NOT SHOWN, BUT SHIPPED WITH GRIP SET.
1. APPLY ITEMS 9 & 10 TO BACK SIDE OF GRIP TO PROPERLY ALIGN GRIP ON FINISHED TOOL.
NOTES:

B

RESTRICTED & CONFIDENTIAL
CONFIDENTIAL PROPERTY OF DANIELS MANUFACTURING CORP. NOT TO BE DISCLOSED TO OTHERS. REPRODUCTION OR USED FOR ANY OTHER PURPOSE EXCEPT AS AUTHORIZED IN WRITING BY DANIELS MANUFACTURING. MUST BE RETURNED TO DANIELS MANUFACTURING CORP. ON COMPLETION OF ORDER OR PURPOSES FOR WHICH LENT.
CREATED FROM AN INVENTOR MODEL.
CHANGES MUST BE REFLECTED IN THE 3D PART
DO NOT SCALE DRAWING

MATERIAL	N/A	HEAT TREAT	N/A	FINISH	N/A
DRN. KIRK C KOONS CHK'D. TLM		DATE 1/17/2017 DATE 1/17/2017		DMC DANIELS MANUFACTURING CORP. ORLANDO, FLORIDA CAGE 11851	
TOLERANCE: UNLESS OTHERWISE SPECIFIED FRACTIONS ± 1/32 ANGLE ± 1/2° DECIMAL INCHES: .X ± .020 .XX ± .010 .XXX ± .005 .XXXX ± .0005 REMOVE BURRS AND BREAK SHARP EDGES .005 - .015 SURFACE FINISH TO BE 63/ OR BETTER ALL OVER			TITLE GRIP SET, SCT, MPT-250C WHERE USED: MPT-250C		
SIZE	B	SCALE	1 : 1	CAD P/N	15-3318
SHEET		1 OF 1		DWG. NO.	15-3318
					REV. C

